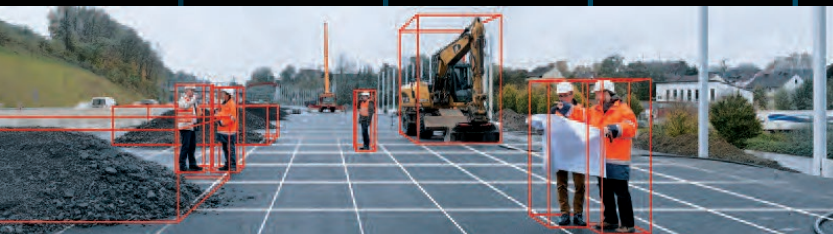




## *The most advanced Hazardous Zone Monitoring (HZM) safety system including Pedestrian Detection System (PDS)*

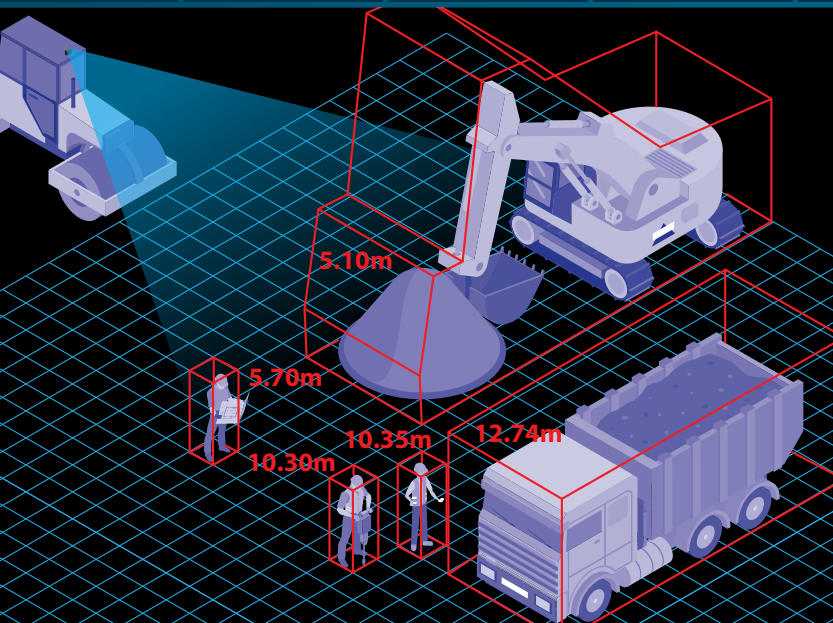


*“...a game changer that will save many lives”*

Developed by PRM to improve safety around mobile machines, **Sentinel Vision** utilises an innovative & unique 3D Smart Sensor, that incorporates IFM patented Photonic Mixing Device (PMD) technology.

It uses Time-of-Flight distance measurement and PMD technology to identify objects within its field of view, capturing the entire object in three dimensions.

**Sentinel Vision** provides critical information for distance monitoring, obstacle detection, collision avoidance and area surveillance.



- Provides full three-dimensional imaging to assist mobile machines
- Ensures obstacle detection and collision avoidance with just one 3D image
- Operates in harsh environments and in full sunlight up to 120k lux
- Processes 3D image data onboard and outputs via CAN or Ethernet



*“...Finally a solution that ticks all the boxes AND is cost effective”*



**3D SMART SENSOR**

- **INNOVATIVE**
- **ROBUST**
- **FAST**
- **RELIABLE**
- **FLEXIBLE**

**Overcomes all the shortcomings of other systems on the market today**

| Function / Capability   | Sentinel Vision | Laser Scanner | Radar+Camera<br>Radar Only | Dual Camera<br>Optical | Ultrasonic | RFID Tag-Based System |
|---|-----------------|---------------|----------------------------|------------------------|------------|-----------------------|
| Seperate alarms for 'Pedestrian' objects vs 'Vehicle' objects | ✓               | ✗             | ✗                          | ✗                      | ✗          | ✗                     |
| Maps the hazardous region in full 3D                          | ✓               | ✗             | ✗                          | ✗                      | ✗          | ✗                     |
| Detects Retro Reflective Hi-Vis wearing pedestrians           | ✓               | ✗             | ✗                          | ✗                      | ✗          | ✗                     |
| Ignore vehicles - No alarm (optional)                         | ✓               | ✗             | ✗                          | ✗                      | ✗          | ✗                     |
| Detect crouching pedestrians                                  | ✓               | ✓             | ✗                          | ✗                      | ✗          | ✗                     |
| Works in all light conditions                                 | ✓               | ✗             | ✗                          | ✗                      | ✓          | ✓                     |
| Works in dusty & steamy environments                          | ✓               | ✗             | ✗                          | ✗                      | ✓          | ✓                     |
| Configurable 3D zones of detection                            | ✓               | ✗             | ✗                          | ✗                      | ✗          | ✗                     |
| Configurable 2D zones of detection                            | ✓               | ✓             | ✗                          | ✓                      | ✗          | ✗                     |
| Configurable voice alarms - Specific Announcements            | ✓               | ✗             | ✗                          | ✗                      | ✗          | ✗                     |
| Measures speed and direction of objects                       | ✓               | ✓             | ✗                          | ✓                      | ✗          | ✗                     |
| Monitor specific crush zones - up to 60 seperate zones        | ✓               | ✗             | ✗                          | ✗                      | ✗          | ✗                     |

**Available Exclusively from**



Preferred Integrator

Proudly supported by:



**E: [prm@premrock.com.au](mailto:prm@premrock.com.au)**

**[www.premierrockmachinery.com.au](http://www.premierrockmachinery.com.au)**